

Make a success of the business

PRESENTATION

**WELCOME
CREATINGWAY**



CONTENT

1 **Company Profile**

2 **Our Teams**

3 **Industry & Material Service**

4 **Key Customers**

5 **Equipment**

6 **Product Show**

7 **Our Statement**

8 **Contact us**

CREATINGWAY PROFILE

- Creatingway Technology specialize in CNC machining services, metal fabrication, rapid prototype and plastic injection mold market since 2003. We serve from design, development, prototype to lower volume production with over 14 years' experience. Our factory is applied for ISO9001 certificate.
- At Creatingway, you can see our advanced facilities like high speed CNC machines, CNC Machining center, CNC machining lathe, Laser cutting, metal fabrication machines, drilling, grinding etc. We are dedicated to promote our skills and knowledge which including product engineering, production process control and quality inspection and after-sales services to meet our global customers.
- Welcome to contact us!

OUR TEAMS

Serve Department

At Creatingway, there have 7 department, and branches as below:

- Management department
- Marketing and Sales department
- Design and Engineering department
- Production department
- Quality control department
- Packaging and Shipment department
- After-sales service department

SERVICE

Serve different industry field:

1. Communications
2. Automate and Robots
3. Aerospace
4. Gas and Oil areas
5. Medical device
6. Automotive
7. Lighting
8. Electronic application
9. The others

Serve various materials option:

Metal parts

1. Aluminum alloy --- Al 6061, Al 7075, Al 5052, Al 6082 etc.
2. Copper, Bronze, Brass
3. Carbon Steel --- Mild steel, C45 steel, Tool Steel, 4140 steel
4. Stainless steel --- type 303, 304, 316, 316L etc.
5. Galvanized sheet

Plastic parts

1. ABS, PC, Nylon, POM, PMMA, UPE, PEEK, PP, HDPE.
2. FDA POM, PPSU, PEEK

Customized materials.

KEY CUSTOMERS

MAX MOBILITY

תכנון ופיתוח ת"מס הנדסה
HI-TECH
ENGINEERING PLANNING
AND DEVELOPING M.I.B LTD

 **AFFINITY**
MANUFACTURING LTD.
ISO 9001:2008 CERTIFIED COMPANY

 **VJ Engineering**

**ezial**
MANUFACTURING SYSTEMS

NEXIONA


HONDA


MACHINES INC.
Precision CNC Machining and
Milling

FOXCONN®

**APTUS**
DesignWorks

**BISON**
Gear & Engineering Corp.

ABB


Cadence Fluidics

WHIRLW  ND
Wheelchair

**LEISH**
Celebrating 35 years


HUAWEI

EQUIPMENT

Over 30 sets CNC machine, 5 sets CNC center. 1 set Laser cutting machine, 3 set metal fabrication machines, 5 sets drillings, 2 sets grinding and the others facilities. 3 EDM machines, 6 CNC machining lathe. Over 6 injection machines.

CNC Machines



Quality Facilities



Metal Fabrication Machines



PRODUCT SHOW

CREATINGWAY



CREATINGWAY



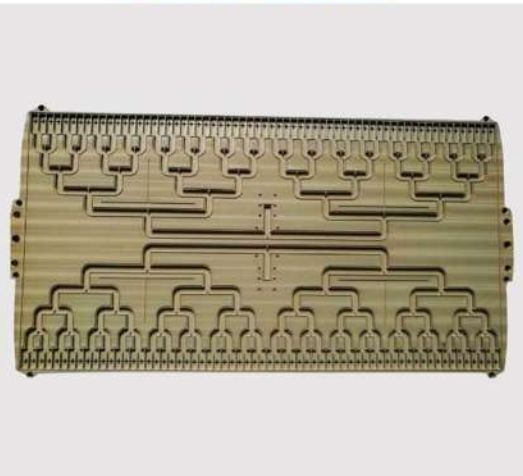
CREATINGWAY



CREATINGWAY



CREATINGWAY



CREATINGWAY



CREATINGWAY



CREATINGWAY



CREATINGWAY



CREATINGWAY



CREATINGWAY



CREATINGWAY



CREATINGWAY



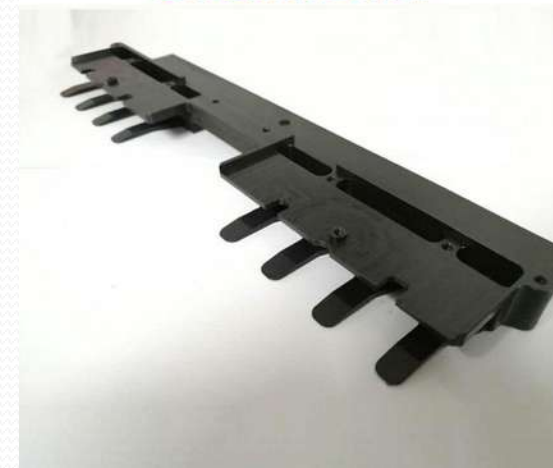
CREATINGWAY



CREATINGWAY



CREATINGWAY



OUR STATEMENT

- At Creatingway, our team aim to machining high good quality products to our global customers, we offer quickly turnaround to the whole process from inquiry, quotation, rapid prototype, low-volume production till shipping.
- Our clients are range from: United States, Mexico, Portugal, Canada, UK, Netherland, Switzerland, Sweden, Spain, Latvia, Slovenia, Australia, New Zealand, Israel etc 32 countries, and we are still developing more customers from global.
- Creatingway now have 88 workers in CNC machining, and 35 workers in plastic molds. We have 5 engineers and 10 QC person.
- Currently, our average annual sales amount is : 4.2 million dollars in 2016, our goal is 5.0 million in 2017.

CONTACT US

- Product Inquires: sales@creatingway.com
- Engineer Inquires: engineer@creatingway.com
- Creatingway Technology (HK) Limited
- Address : No 5, Xinlin Industrial Area, Mid Huan Guan Road, Guanlan Town on Shenzhen City, China.
- Tel : 0086-755-89492523

Make a success of the business

PRESENTATION

THANK YOU

